



Western Division Office
Irwindale, CA 91702
TELEPHONE: 818 553-8800

Date: August 21, 2022

Mr. Jim Swaney
San Diego County Air Pollution Control District
10124 Old Grove Road
San Diego, CA 92131

Dear Mr. Swayne,

Attached is the Vulcan Materials Company Carroll Canyon Facility Site ID 6306 Risk Reduction Audit and Plan Reporting Year 2017 with associated Application to modify our Permit to Operate. The documents are submitted to satisfy the San Diego County Air Pollution Control District's request for a Risk Reduction Audit and Approval as stipulated in the "Approval of Revised AB2588 "Hot Spots" Health Risk Assessment", dated February 22, 2022.

If you have any questions, please do not hesitate to reach out to me at (818)858-5984.

Regards,



G. Brent Leclerc
Manager – Environmental Services
Vulcan Materials Company

cc. Scott Taylor, TES

**SAN DIEGO COUNTY
AIR POLLUTION CONTROL DISTRICT**
10124 Old Grove Rd.
San Diego, CA 92131

**VULCAN MATERIALS COMPANY
CARROLL CANYON FACILITY
SITE ID 6306
RISK REDUCTION AUDIT AND PLAN
REPORTING YEAR 2017**

Prepared For:

Vulcan Materials Company
10051 Black Mountain Rd.
San Diego, CA 92126

Project No: VULCN-20-2718

Contact: Scott Taylor

Date: August 21, 2022



**TAYLOR
ENVIRONMENTAL
SERVICES, INC.**

5122 Bolsa Avenue, Suite 101
Huntington Beach, CA 92649
Phone: (714) 587-2595 Fax: (714) 587-2598
www.tayloresinc.com

Table of Contents

Part I EXECUTIVE SUMMARY.....	1
Part II Project Description	3
A. Business Background	3
1. Name.....	3
2. Owner	3
3. Contact.....	3
4. Facility Address 10051 Black Mountain Rd.....	3
San Diego, CA 92126	3
5. Business Description	3
B. Description of Facility	3
Part III Risk Reduction	5
A. Emission Sources.....	5
B. Risk Contribution	5
C. Risk Reduction Evaluation.....	6
D. Risk Reduction Schedule	8
ATTACHMENT “A” ACUTE HRA RESULTS	10
ATTACHMENT “B” CHRONIC WORKER HRA RESULTS.....	12

List of Tables

Table 1 - Emission Unit Health Risk Contribution Acute.....	5
Table 2 - Emission Unit Health Risk Contribution Chronic.....	5
Table 3 - Specific TAC Health Risk Contribution Acute	5
Table 4 - Specific TAC Health Risk Contribution Chronic	5
Table 5 - List of Sources Removed from the Health Risk Assessment	6
Table 6 - Summary of Health Risk Assessment at Point of Maximum Impact (PMI)	8

List of Figures

Figure 1 - Vicinity Map	4
Figure 2 - Map of Eliminated Sources	7

Part I EXECUTIVE SUMMARY

This risk reduction plan and associated application, prepared by Taylor Environmental Services, on behalf of Vulcan Materials Company (Vulcan) details the risk reduction audit and plan (RRAP) for the Aggregate Plant, Recycled Asphalt Plant, Hot Mix Asphalt plant and Cement Treated Base plant located at 10051 Black Mountain Rd., San Diego, CA 92126.

On February 22, 2022, Vulcan received approval of the 2017 Health Risk Assessment (HRA). The approved HRA determined an occupational risk of 2.63 for the Acute Health Hazard Index and a maximum occupational Chronic Health Hazard Index of 1.20. Pursuant to Rule 1210 (e)1, HRA's resulting in a risk equal to or greater than 1.0, above the significance risk threshold, a risk reduction audit and plan is required.

In accordance with San Diego Air Pollution Control District Rule 2010 (e) (1)

(1) Within 180 days of receipt of written notice from the Air Pollution Control Officer that a stationary source's most recent approved health risk assessment indicates health risks at or above the significant risk threshold(s), the owner or operator shall submit to the Air Pollution Control Officer, for completeness review and approval, a risk reduction audit and plan. For the purpose of this section, the significant risk threshold for maximum individual cancer risk shall be:

- (i) equal to or greater than 10 in one million for emissions inventory years 2018 and later, or*
- (ii) equal to or greater than 100 in one million for emissions inventory years prior to 2018.*

The risk reduction audit and plan shall comply with the requirements of Subsection (e)(2). Such risk reductions shall be accomplished within five years of the date the plan is approved by the Air Pollution Control Officer unless an extension has been granted pursuant to Subsections (e)(4) or (e)(5).

(2) The risk reduction audit and plan submitted by the owner or operator shall be accompanied by appropriate application(s) to implement the plan and contain all of the following:

- (i) The name and location of the stationary source.*
- (ii) A facility risk characterization which includes an updated emissions inventory report and health risk assessment, if the risk due to total facility emissions has increased to above or decreased to below the levels indicated in the previously approved health risk assessment.*
- (iii) The identification of all the emission unit(s) for which the owner or operator proposes to reduce toxic air contaminant emissions and the identification of the airborne toxic risk reduction measures proposed for implementation to reduce such emissions, and the anticipated emission and health risk reductions.*

- (iv) *A schedule for implementing the proposed airborne toxic risk reduction measures within five years. The schedule shall include specific increments of progress towards implementing the airborne toxic risk reduction measures.*

- (v) *A demonstration, including supporting documentation such as emission calculations, that the proposed airborne toxic risk reduction measures will reduce or eliminate toxic air contaminant emissions from the stationary source. The demonstration shall be made through analogy with the approved health risk assessment for the stationary source or by submission of a revised forecast risk assessment. The demonstration also shall include any foreseeable new or increased emissions of toxic air contaminants from the stationary source and the estimated health risks resulting from such new or increased emissions during the period approved for implementation of the risk reduction audit and plan.*

- (vi) *A schedule for providing progress reports on reductions in emissions of toxic air contaminants and estimated health risks achieved under the implemented plan. Progress reports shall include a technology review, as applicable, that provides an update on new emissions reducing technologies, and shall be provided not less frequently than within 12 months from when the plan is approved, and annually thereafter, and may be incorporated into emission inventory report updates required pursuant to Section 44344 of the California Health and Safety Code.*

Part II Project Description

A. Business Background

- | | | |
|----|----------------------|---|
| 1. | Name | Vulcan Materials Company |
| 2. | Owner | Vulcan Materials Company |
| 3. | Contact | Brent Leclerc - Manager Environmental Services
10051 Black Mountain Rd.
San Diego, CA 92126
(818) 858-5984 |
| 4. | Facility Address | 10051 Black Mountain Rd.
San Diego, CA 92126
(Site ID 6306) |
| 5. | Business Description | Aggregate Plant, Recycled Asphalt Plant (RAP),
Hot Mix Asphalt Plant and Cement Treated Base
Plant (CTB) |

B. Description of Facility

Vulcan Materials Company operates an aggregate plant, recycled asphalt plant, Hot Mix asphalt plant and a cement treated base plant located at 10051 Black Mountain Rd., San Diego, CA 92126 (Site ID 06306). Refer to Figure 1 below for a vicinity map detailing the location of the site.

This facility produces aggregate, hot mix asphalt, RAP and CTB. The asphalt is comprised of aggregate and asphalt oil. The facility mines and processes aggregate at the site. The aggregate is stored in open stockpiles and wetted to control PM emissions. RAP is delivered to the site by trucks and processed for sale directly to customers or to be used in the asphalt mix. CTB is prepared on demand when projects require it. The aggregate from the site is blended with cement that is delivered to the site and stored in a silo. The Asphalt plant is fed through open stockpiles which are located over an underground conveyor system. The drum dryer/mixer fired on natural gas which heats the aggregate and asphalt oil to proper mixing temperatures. The finished product is then conveyed to storage silos and loaded into trucks. The facility produces State of California Standard Specification asphalt concrete mixes, which typically consist of ¾", ½", ⅜" asphalt concrete mix.

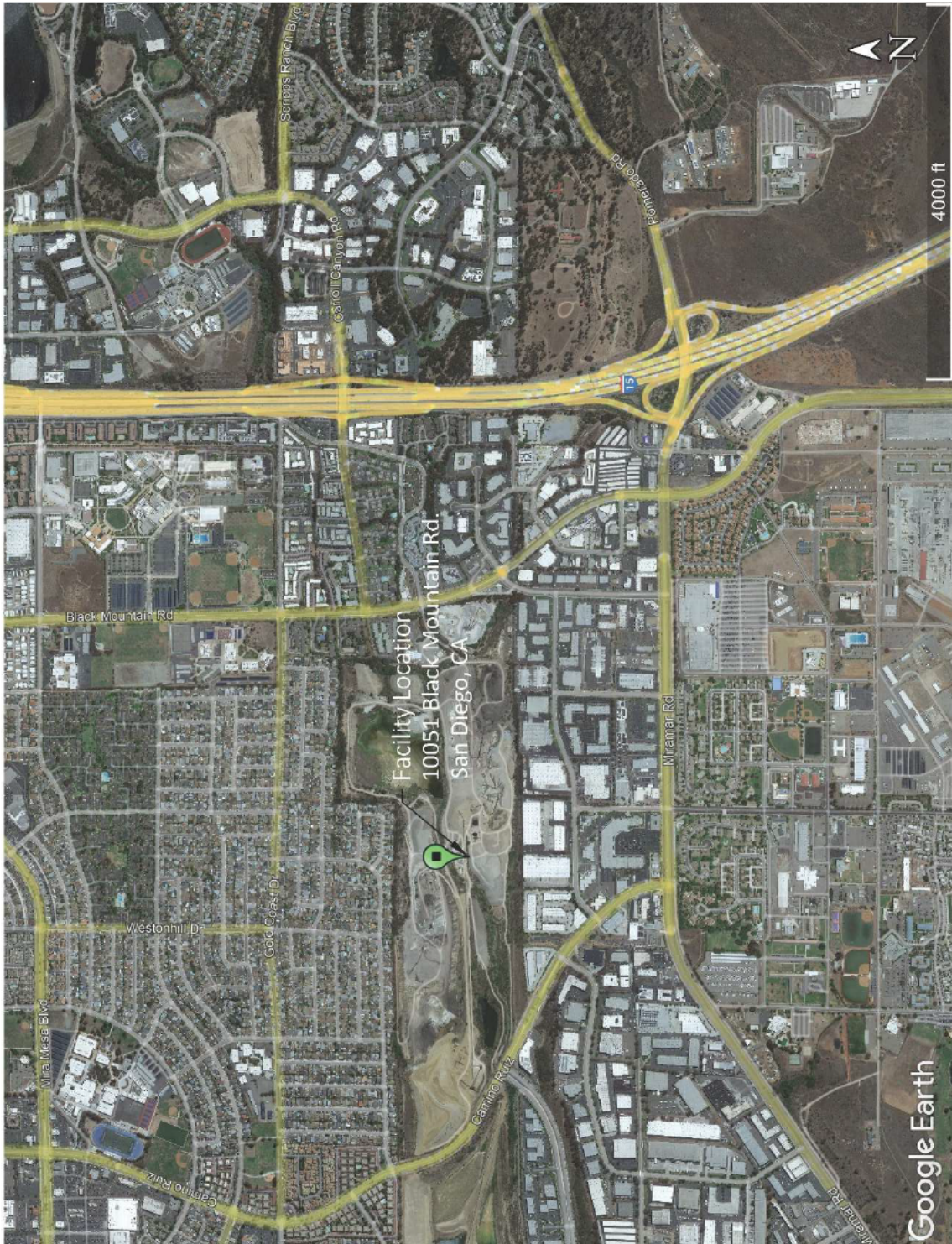


Figure 1 - Vicinity Map

Part III Risk Reduction

A. Emission Sources

The Vulcan facility contains the following emission units that contribute to public health risks above the significant mitigation levels:

- Aggregate Facility (point and volume sources)
- Recycled Asphalt Conveying and Screening (point and volume sources)
- Cement Treated Base Plant (point source)
- Asphalt Dryer Baghouse (point sources)
- All Stockpiles (area source)
- All Unpaved and paved haul roads (line volume sources)

B. Risk Contribution

According to the 2017 HRA approval, dated February 22, 2022, the aggregate facility contributes the most to the total Acute and Chronic health risks at the facility, as seen in Table 1 and Table 2.

Table 1 - Emission Unit Health Risk Contribution Acute

Source	Maximum Acute % Contribution
Aggregate Facility	76%

Table 2 - Emission Unit Health Risk Contribution Chronic

Source	Maximum Chronic % Contribution
Aggregate Facility	68%

Specific toxic air contaminants (TACs) that contribute the most to overall health risk under the Acute and Chronic risk scenario are detailed in Table 3 and 4.

Table 3 - Specific TAC Health Risk Contribution Acute

TAC	Maximum Acute
Nickel	99%

Table 4 - Specific TAC Health Risk Contribution Chronic

TAC	Maximum Chronic
Arsenic	85%
Silica	11%

C. Risk Reduction Evaluation

The Carroll Canyon facility is in the process of transitioning the mining operation to a smaller mining/recycling operation. This transition will result in a significant portion of the dry and wet portion of the aggregate processing operation to be shutdown. All the sources impacted will cease operation by the end of Quarter 1 of 2023. For the modified operation, the facility will be using some of the existing equipment and some new equipment that will be located at the western end of the facility. The ceasing of activities at the existing aggregate processing plant and the modified equipment will result in an overall emission reduction for the site that will reduce the Acute and Chronic risks.

The risk reduction will be performed in two phases. Phase I will be the discontinued operation of portions of the current aggregate plant. This will be completed by March 2023. Phase II will be the modification of the current permit to include the smaller mining/recycling operation. As discussed with SDAPCD, it is not possible to provide both applications at this time. Phase I of the reduction will demonstrate the modification of the stationary plant permit will reduce the risk below the Acute and Chronic Hazard Indexes satisfying the requirements of the Risk Reduction Plan. Phase II will include the modification of the air permit to add the smaller mining/recycling operation. The application will evaluate the increase from the additional equipment (Rule 1200) and an updated HRA that will look at the entire facility risk (Rule 1210). Phase II will be submitted under separate cover.

1. Phase I Risk Reduction

A revised health risk was prepared to quantify the result of the closing of the aggregate plant. Modifications to the toxic emissions inventory were made to reflect the end of operations at the aggregate processing plant. Table 5 lists the sources in the model that were removed from the emissions inventory. Figure 2 contains a map with the location of the removed sources. The district's original modeling files from the February 22, 2022 revised HRA were used to run this risk reduction scenario.

Table 5 - List of Sources Removed from the Health Risk Assessment

Source ID	Source Type	Description
D12	Volume	5 ½ STD Cone Crusher
D1233A	Volume	Rock Plant Conveying
D1233B	Volume	Rock Plant Conveying
D1233C	Volume	Rock Plant Conveying
D2A	Area	Storage Pile
D2B	Area	Storage Pile
D2443	Area	Storage Pile Wash
D27	Volume	S7 Screen
D28	Volume	S8 Screen
D13	Volume	5 ½ Shorthead Cone Crusher

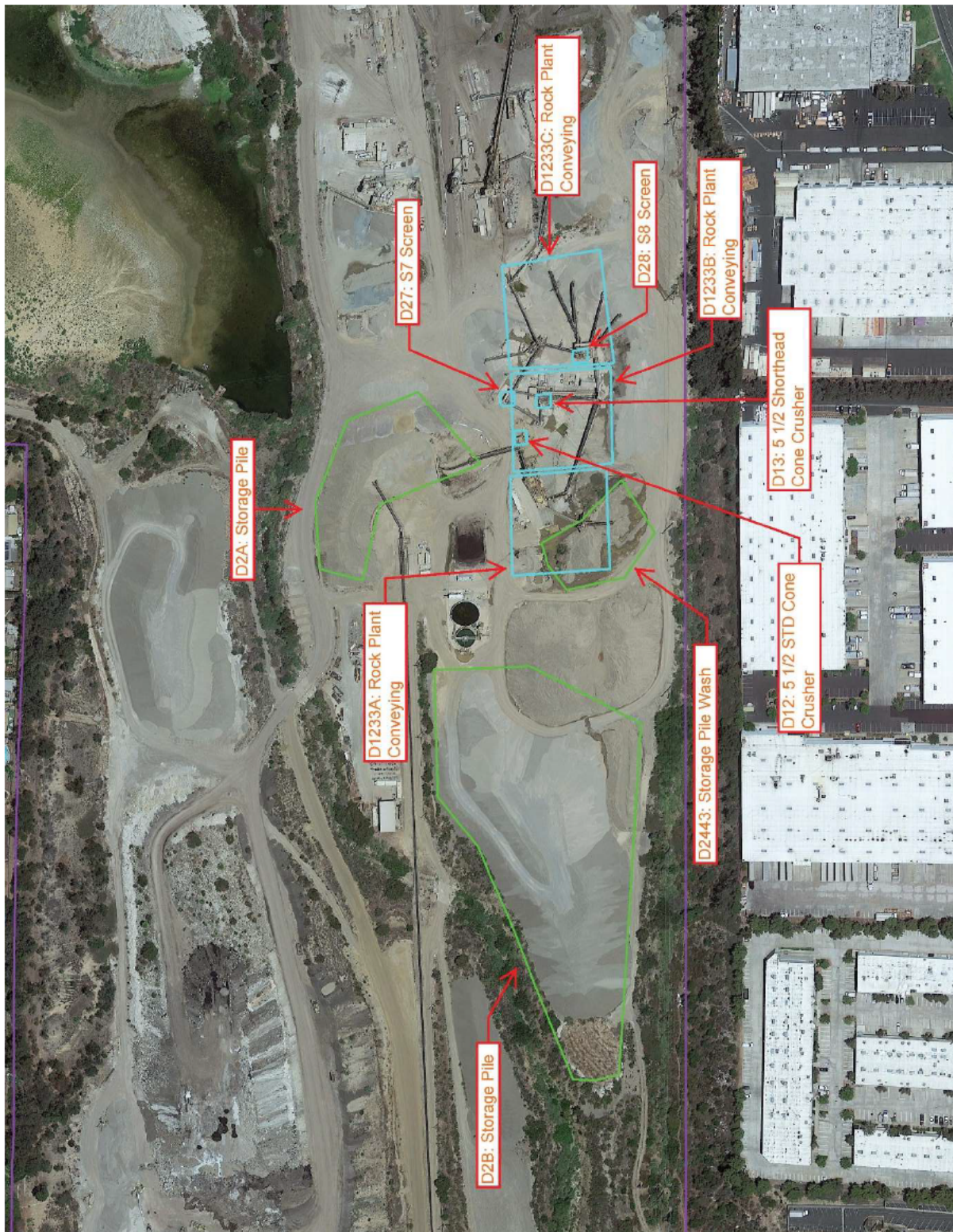


Figure 2 - Map of Eliminated Sources

Table 6 summarizes the results of the health risk assessment after implementing the changes to the model described above.

Table 6 - Summary of Health Risk Assessment at Point of Maximum Impact (PMI)

HRA Scenario	PMI Receptor No.	UTM (x)	UTM (y)	Hazard Index (HI)
Acute Hazard Index	469	488036	3640017	0.49
Occupational Chronic Hazard Index	452	487781	3640017	0.93

The point of maximum impact for the acute hazard index and worker chronic hazard index are below 1. A risk results table for the 45 receptors with the highest acute risk can be found in Attachment "A". A risk results table for the 45 receptors with the highest occupational chronic risk can be found in Attachment "B". The proposed risk reduction plan satisfies the district's threshold of 1 for the maximum occupational acute and chronic Hazard Index.

The HARP modeling files used for the Phase 1 health risk assessment can be found at the following link:

<https://www.dropbox.com/sh/qdwyu4rwhrojml/AAC2yBB9g0px8U0l-DjpVMLAa?dl=0>

D. Risk Reduction Schedule

1. Phase I (Aggregate Plant Decommissioning)

In conjunction with this submittal is an application to modify the Permit to Operate for the Aggregate plant (APP870745). This modification will remove a major portion of the aggregate processing plant. The revised HRA discussed in Section C demonstrates the modification will reduce the Hazard Index thresholds below both Acute and Chronic Indexes.

The transition of the aggregate plant to support on site modified operation has already begun with regards to the operation of the facility. Over the next seven months the equipment will begin to be decommissioned. That includes removing key pieces of equipment as well as some of the plant infrastructure. The equipment will become inoperable at that point.

The last major portion of the operation will be to decommission the stockpiles. While the equipment is in the process of becoming inoperable the piles will continue to be worked until all the material is removed. At that point this portion of the aggregate plant will cease to be operational. Based on the estimation of the current schedule this transition will be completed and stockpiles removed by the end of March of 2023.

2. Phase II (Modified System)

Phase II will be the modification of the current permit to include the smaller mining/recycling operation. The modified system has been sketched out and work is beginning to select the equipment that will be used for the system. The schedule is currently to submit the application for the system some time between September 2022 and the end of 2023. There are several factors that must be addressed including lead time for equipment, capital for equipment and infrastructure so the plant can operate at the new location.

The modification of the aggregate plant for the equipment will include an emissions analysis and an updated HRA to demonstrate the continued compliance with maintaining the operation below the thresholds. A preliminary HRA has been prepared and determined that the facility will remain below the thresholds after Phase II is complete. A formal analysis with the details of the HRA will be included in the Phase II submittal.

Every effort is being made to submit this application as soon as there is sufficient information to complete the application.

ATTACHMENT "A"
ACUTE HRA RESULTS

ATTACHMENT "A"
ACUTE HRA RESULTS

*HARP - HRACalc v22118 8/17/2022 4:39:21 PM - Acute Risk - Input File: C:\Users\Jordan Alejo\Documents\Carroll Canyon June 2022\ULCAN CC SDAPCD MODEL\hra\acutehRAInput.hra

REC	GRP	NETID	X	Y	SCENARIO	CV	CNS	IMMUN	KIDNEY	GILV	REPRO/	RESP	SKIN	EYE	TEETH	ENDO	BLOOD	ODOR	GENERAL	MAXHI
469	ALL	488036	3640017	NonCancerAcute	3.59E-01	3.60E-01	4.92E-01	0.00E+00	0.00E+00	0.00E+00	3.73E-01	2.56E-03	0.00E+00	1.70E-02	0.00E+00	0.00E+00	1.23E-02	0.00E+00	0.00E+00	4.92E-01
470	ALL	488051	3640017	NonCancerAcute	3.58E-01	3.59E-01	4.88E-01	0.00E+00	0.00E+00	0.00E+00	3.72E-01	2.67E-03	0.00E+00	1.86E-02	0.00E+00	0.00E+00	1.35E-02	0.00E+00	0.00E+00	4.88E-01
451	ALL	487766	3640017	NonCancerAcute	3.02E-01	3.03E-01	4.65E-01	0.00E+00	0.00E+00	0.00E+00	3.23E-01	2.92E-03	0.00E+00	2.75E-02	0.00E+00	0.00E+00	1.99E-02	0.00E+00	0.00E+00	4.65E-01
450	ALL	487751	3640017	NonCancerAcute	2.99E-01	3.00E-01	4.63E-01	0.00E+00	0.00E+00	0.00E+00	3.20E-01	2.88E-03	0.00E+00	2.70E-02	0.00E+00	0.00E+00	1.96E-02	0.00E+00	0.00E+00	4.63E-01
456	ALL	487841	3640017	NonCancerAcute	3.19E-01	3.20E-01	4.63E-01	0.00E+00	0.00E+00	0.00E+00	3.27E-01	2.38E-03	0.00E+00	1.76E-02	0.00E+00	0.00E+00	1.27E-02	0.00E+00	0.00E+00	4.63E-01
453	ALL	487796	3640017	NonCancerAcute	3.10E-01	3.12E-01	4.63E-01	0.00E+00	0.00E+00	0.00E+00	3.27E-01	2.59E-03	0.00E+00	2.16E-02	0.00E+00	0.00E+00	1.56E-02	0.00E+00	0.00E+00	4.63E-01
452	ALL	487781	3640017	NonCancerAcute	3.06E-01	3.07E-01	4.62E-01	0.00E+00	0.00E+00	0.00E+00	3.25E-01	2.76E-03	0.00E+00	2.47E-02	0.00E+00	0.00E+00	1.79E-02	0.00E+00	0.00E+00	4.62E-01
457	ALL	487856	3640017	NonCancerAcute	3.20E-01	3.21E-01	4.61E-01	0.00E+00	0.00E+00	0.00E+00	3.33E-01	2.34E-03	0.00E+00	1.69E-02	0.00E+00	0.00E+00	1.22E-02	0.00E+00	0.00E+00	4.61E-01
455	ALL	487826	3640017	NonCancerAcute	3.17E-01	3.18E-01	4.61E-01	0.00E+00	0.00E+00	0.00E+00	3.30E-01	2.30E-03	0.00E+00	1.64E-02	0.00E+00	0.00E+00	1.19E-02	0.00E+00	0.00E+00	4.61E-01
454	ALL	487811	3640017	NonCancerAcute	3.12E-01	3.13E-01	4.59E-01	0.00E+00	0.00E+00	0.00E+00	3.27E-01	2.45E-03	0.00E+00	1.92E-02	0.00E+00	0.00E+00	1.39E-02	0.00E+00	0.00E+00	4.59E-01
458	ALL	487871	3640017	NonCancerAcute	3.19E-01	3.20E-01	4.58E-01	0.00E+00	0.00E+00	0.00E+00	3.31E-01	2.26E-03	0.00E+00	1.56E-02	0.00E+00	0.00E+00	1.13E-02	0.00E+00	0.00E+00	4.58E-01
449	ALL	487736	3640017	NonCancerAcute	2.95E-01	2.96E-01	4.52E-01	0.00E+00	0.00E+00	0.00E+00	3.13E-01	2.68E-03	0.00E+00	2.43E-02	0.00E+00	0.00E+00	1.76E-02	0.00E+00	0.00E+00	4.52E-01
459	ALL	487886	3640017	NonCancerAcute	3.15E-01	3.16E-01	4.50E-01	0.00E+00	0.00E+00	0.00E+00	3.25E-01	2.07E-03	0.00E+00	1.28E-02	0.00E+00	0.00E+00	9.27E-03	0.00E+00	0.00E+00	4.50E-01
460	ALL	487901	3640017	NonCancerAcute	3.12E-01	3.13E-01	4.44E-01	0.00E+00	0.00E+00	0.00E+00	3.21E-01	1.95E-03	0.00E+00	1.11E-02	0.00E+00	0.00E+00	8.01E-03	0.00E+00	0.00E+00	4.44E-01
465	ALL	487976	3640017	NonCancerAcute	3.16E-01	3.17E-01	4.43E-01	0.00E+00	0.00E+00	0.00E+00	3.29E-01	2.37E-03	0.00E+00	1.71E-02	0.00E+00	0.00E+00	1.24E-02	0.00E+00	0.00E+00	4.43E-01
518	ALL	488407.4	36400323	NonCancerAcute	3.09E-01	3.10E-01	4.41E-01	0.00E+00	0.00E+00	0.00E+00	3.17E-01	1.91E-03	0.00E+00	1.11E-02	0.00E+00	0.00E+00	8.00E-03	0.00E+00	0.00E+00	4.41E-01
448	ALL	487721	3640017	NonCancerAcute	2.87E-01	2.89E-01	4.35E-01	0.00E+00	0.00E+00	0.00E+00	3.03E-01	2.43E-03	0.00E+00	2.07E-02	0.00E+00	0.00E+00	1.50E-02	0.00E+00	0.00E+00	4.35E-01
464	ALL	487961	3640017	NonCancerAcute	3.13E-01	3.14E-01	4.34E-01	0.00E+00	0.00E+00	0.00E+00	3.25E-01	2.28E-03	0.00E+00	1.55E-02	0.00E+00	0.00E+00	1.12E-02	0.00E+00	0.00E+00	4.34E-01
385	ALL	486805.4	3640110	NonCancerAcute	3.29E-01	3.29E-01	4.34E-01	0.00E+00	0.00E+00	0.00E+00	3.34E-01	1.56E-03	0.00E+00	6.40E-03	0.00E+00	0.00E+00	4.63E-03	0.00E+00	0.00E+00	4.34E-01
467	ALL	488006	3640017	NonCancerAcute	3.07E-01	3.08E-01	4.33E-01	0.00E+00	0.00E+00	0.00E+00	3.19E-01	2.23E-03	0.00E+00	1.55E-02	0.00E+00	0.00E+00	1.12E-02	0.00E+00	0.00E+00	4.33E-01
463	ALL	487946	3640017	NonCancerAcute	3.04E-01	3.05E-01	4.25E-01	0.00E+00	0.00E+00	0.00E+00	3.15E-01	2.17E-03	0.00E+00	1.46E-02	0.00E+00	0.00E+00	1.06E-02	0.00E+00	0.00E+00	4.25E-01
208	ALL	487761.1	3639999	NonCancerAcute	2.78E-01	2.80E-01	4.25E-01	0.00E+00	0.00E+00	0.00E+00	2.96E-01	2.60E-03	0.00E+00	2.37E-02	0.00E+00	0.00E+00	1.72E-02	0.00E+00	0.00E+00	4.25E-01
468	ALL	487991	3640017	NonCancerAcute	2.98E-01	2.99E-01	4.25E-01	0.00E+00	0.00E+00	0.00E+00	3.11E-01	2.29E-03	0.00E+00	1.71E-02	0.00E+00	0.00E+00	1.24E-02	0.00E+00	0.00E+00	4.25E-01
468	ALL	488021	3640017	NonCancerAcute	3.03E-01	3.04E-01	4.25E-01	0.00E+00	0.00E+00	0.00E+00	3.14E-01	2.18E-03	0.00E+00	1.49E-02	0.00E+00	0.00E+00	1.08E-02	0.00E+00	0.00E+00	4.25E-01
447	ALL	487706	3640017	NonCancerAcute	2.78E-01	2.79E-01	4.20E-01	0.00E+00	0.00E+00	0.00E+00	2.94E-01	2.37E-03	0.00E+00	2.03E-02	0.00E+00	0.00E+00	1.47E-02	0.00E+00	0.00E+00	4.20E-01
461	ALL	487916	3640017	NonCancerAcute	2.85E-01	2.86E-01	4.15E-01	0.00E+00	0.00E+00	0.00E+00	2.97E-01	2.11E-03	0.00E+00	1.53E-02	0.00E+00	0.00E+00	1.11E-02	0.00E+00	0.00E+00	4.15E-01
4133	ALL	487748.4	3639997	NonCancerAcute	2.67E-01	2.69E-01	4.14E-01	0.00E+00	0.00E+00	0.00E+00	2.86E-01	2.62E-03	0.00E+00	2.48E-02	0.00E+00	0.00E+00	1.79E-02	0.00E+00	0.00E+00	4.14E-01
4134	ALL	487763.4	3639997	NonCancerAcute	2.72E-01	2.73E-01	4.13E-01	0.00E+00	0.00E+00	0.00E+00	2.89E-01	2.51E-03	0.00E+00	2.27E-02	0.00E+00	0.00E+00	1.64E-02	0.00E+00	0.00E+00	4.13E-01
4131	ALL	487718.4	3639997	NonCancerAcute	2.66E-01	2.67E-01	4.11E-01	0.00E+00	0.00E+00	0.00E+00	2.83E-01	2.51E-03	0.00E+00	2.31E-02	0.00E+00	0.00E+00	1.67E-02	0.00E+00	0.00E+00	4.11E-01
4135	ALL	487778.4	3639997	NonCancerAcute	2.72E-01	2.73E-01	4.11E-01	0.00E+00	0.00E+00	0.00E+00	2.88E-01	2.40E-03	0.00E+00	2.09E-02	0.00E+00	0.00E+00	1.51E-02	0.00E+00	0.00E+00	4.11E-01
4132	ALL	487733.4	3639997	NonCancerAcute	2.63E-01	2.64E-01	4.08E-01	0.00E+00	0.00E+00	0.00E+00	2.81E-01	2.57E-03	0.00E+00	2.42E-02	0.00E+00	0.00E+00	1.75E-02	0.00E+00	0.00E+00	4.08E-01
4130	ALL	487703.4	3639997	NonCancerAcute	2.64E-01	2.65E-01	4.06E-01	0.00E+00	0.00E+00	0.00E+00	2.80E-01	2.35E-03	0.00E+00	2.07E-02	0.00E+00	0.00E+00	1.50E-02	0.00E+00	0.00E+00	4.06E-01
446	ALL	487691	3640017	NonCancerAcute	2.68E-01	2.69E-01	4.04E-01	0.00E+00	0.00E+00	0.00E+00	2.84E-01	2.36E-03	0.00E+00	2.09E-02	0.00E+00	0.00E+00	1.51E-02	0.00E+00	0.00E+00	4.04E-01
4129	ALL	487688.4	3639997	NonCancerAcute	2.64E-01	2.65E-01	4.00E-01	0.00E+00	0.00E+00	0.00E+00	2.77E-01	2.15E-03	0.00E+00	1.76E-02	0.00E+00	0.00E+00	1.27E-02	0.00E+00	0.00E+00	4.00E-01
517	ALL	488410.6	3640308	NonCancerAcute	2.79E-01	2.79E-01	3.99E-01	0.00E+00	0.00E+00	0.00E+00	2.88E-01	1.83E-03	0.00E+00	1.16E-02	0.00E+00	0.00E+00	8.37E-03	0.00E+00	0.00E+00	3.99E-01
4128	ALL	487673.4	3639997	NonCancerAcute	2.63E-01	2.64E-01	3.99E-01	0.00E+00	0.00E+00	0.00E+00	2.76E-01	2.11E-03	0.00E+00	1.70E-02	0.00E+00	0.00E+00	1.23E-02	0.00E+00	0.00E+00	3.99E-01
4127	ALL	487658.4	3639997	NonCancerAcute	2.62E-01	2.63E-01	3.95E-01	0.00E+00	0.00E+00	0.00E+00	2.75E-01	2.14E-03	0.00E+00	1.77E-02	0.00E+00	0.00E+00	1.28E-02	0.00E+00	0.00E+00	3.95E-01
4136	ALL	487793.4	3639997	NonCancerAcute	2.63E-01	2.64E-01	3.95E-01	0.00E+00	0.00E+00	0.00E+00	2.78E-01	2.26E-03	0.00E+00	1.92E-02	0.00E+00	0.00E+00	1.39E-02	0.00E+00	0.00E+00	3.95E-01
384	ALL	486792.3	3640117	NonCancerAcute	2.93E-01	2.94E-01	3.88E-01	0.00E+00	0.00E+00	0.00E+00	2.98E-01	1.44E-03	0.00E+00	6.40E-03	0.00E+00	0.00E+00	4.63E-03	0.00E+00	0.00E+00	3.88E-01
4126	ALL	487643.4	3639997	NonCancerAcute	2.57E-01	2.58E-01	3.87E-01	0.00E+00	0.00E+00	0.00E+00	2.71E-01	1.12E-03	0.00E+00	1.76E-02	0.00E+00	0.00E+00	1.28E-02	0.00E+00	0.00E+00	3.87E-01
445	ALL	487676	3640017	NonCancerAcute	2.58E-01	2.59E-01	3.86E-01	0.00E+00	0.00E+00	0.00E+00	2.74E-01	1.29E-03	0.00E+00	2.04E-02	0.00E+00	0.00E+00	1.47E-02	0.00E+00	0.00E+00	3.86E-01
516	ALL	488413.7	3640294	NonCancerAcute	2.69E-01	2.70E-01	3.85E-01	0.00E+00	0.00E+00	0.00E+00	2.78E-01	1.85E-03	0.00E+00	1.23E-02	0.00E+00	0.00E+00	8.92E-03	0.00E+00	0.00E+00	3.85E-01
462	ALL	487931	3640017	NonCancerAcute	2.63E-01	2.64E-01	3.85E-01	0.00E+00	0.00E+00	0.00E+00	2.70E-01	2.13E-03	0.00E+00	1.69E-02	0.00E+00	0.00E+00	1.22E-02	0.00E+00	0.00E+00	3.85E-01
4138	ALL	487823.4	3639997	NonCancerAcute	2.54E-01	2.55E-01	3.84E-01	0.00E+00	0.00E+00	0.00E+00	2.70E-01	2.36E-03	0.00E+00	2.13E-02	0.00E+00	0.00E+00	1.54E-02	0.00E+00	0.00E+00	3.84E-01
3712	ALL	488424	3640325	NonCancerAcute	2.67E-01	2.67E-01	3.81E-01	0.00E+00	0.00E+00	0.00E+00	2.75E-01	1.72E-03	0.00E+00	1.06E-02	0.00E+00	0.00E+00	7.70E-03	0.00E+00	0.00E+00	3.81E-01

ATTACHMENT "B"
CHRONIC WORKER HRA RESULTS

*HARP - HRAcalc v22118 8/17/2022 4:40:40 PM - Chronic Risk - Input File: C:\Users\Jordan Alejo\Documents\Carroll Canyon June 2022\VULCAN CC SDAPDC MODEL\hra\workerchronicHRAinput.hra

REC	GRP	NETID	X	Y	SCENARIO	CV	CNS	IMMUN	KIDNEY	GILV	DEVEL	REPRO/	RESP	SKIN	EYE	TEETH	BLOOD	ODOR	GENERAL	MAXHI	
452	ALL	487781	3640017	NonCancerChronicDerived_InhSoilDerm	7.32E-01	8.40E-01	8.65E-05	7.32E-01	9.29E-01	9.29E-01	9.29E-01	9.29E-01	7.32E-01	7.32E-01	3.02E-06	0.00E+00	1.39E-06	4.96E-02	0.00E+00	0.00E+00	9.29E-01
453	ALL	487796	3640017	NonCancerChronicDerived_InhSoilDerm	7.28E-01	8.36E-01	8.61E-05	7.29E-01	9.24E-01	9.24E-01	9.24E-01	9.24E-01	7.28E-01	7.28E-01	3.01E-06	0.00E+00	1.39E-06	4.90E-02	0.00E+00	0.00E+00	9.24E-01
454	ALL	487811	3640017	NonCancerChronicDerived_InhSoilDerm	7.23E-01	8.30E-01	8.52E-05	7.23E-01	9.16E-01	9.16E-01	9.16E-01	9.16E-01	7.23E-01	7.23E-01	2.98E-06	0.00E+00	1.38E-06	4.76E-02	0.00E+00	0.00E+00	9.16E-01
455	ALL	487826	3640017	NonCancerChronicDerived_InhSoilDerm	7.20E-01	8.27E-01	8.46E-05	7.20E-01	9.11E-01	9.11E-01	9.11E-01	9.11E-01	7.20E-01	7.20E-01	2.93E-06	0.00E+00	1.35E-06	4.64E-02	0.00E+00	0.00E+00	9.11E-01
456	ALL	487841	3640017	NonCancerChronicDerived_InhSoilDerm	7.13E-01	8.19E-01	8.36E-05	7.13E-01	9.00E-01	9.00E-01	9.00E-01	9.00E-01	7.13E-01	7.13E-01	2.89E-06	0.00E+00	1.33E-06	4.49E-02	0.00E+00	0.00E+00	9.00E-01
457	ALL	487766	3640017	NonCancerChronicDerived_InhSoilDerm	7.02E-01	8.06E-01	8.31E-05	7.03E-01	8.92E-01	8.92E-01	8.92E-01	8.92E-01	7.02E-01	7.02E-01	2.98E-06	0.00E+00	1.38E-06	4.76E-02	0.00E+00	0.00E+00	8.92E-01
458	ALL	487856	3640017	NonCancerChronicDerived_InhSoilDerm	7.03E-01	8.08E-01	8.24E-05	7.04E-01	8.87E-01	8.87E-01	8.87E-01	8.87E-01	7.03E-01	7.03E-01	2.87E-06	0.00E+00	1.34E-06	4.48E-02	0.00E+00	0.00E+00	8.87E-01
459	ALL	487871	3640017	NonCancerChronicDerived_InhSoilDerm	6.74E-01	7.75E-01	7.92E-05	6.75E-01	8.49E-01	8.49E-01	8.49E-01	8.49E-01	6.74E-01	6.74E-01	2.90E-06	0.00E+00	1.34E-06	4.08E-02	0.00E+00	0.00E+00	8.49E-01
450	ALL	487751	3640017	NonCancerChronicDerived_InhSoilDerm	6.65E-01	7.63E-01	7.86E-05	6.65E-01	8.44E-01	8.44E-01	8.44E-01	8.44E-01	6.65E-01	6.65E-01	2.90E-06	0.00E+00	1.34E-06	4.48E-02	0.00E+00	0.00E+00	8.44E-01
517	ALL	488410.6	3640308	NonCancerChronicDerived_InhSoilDerm	6.68E-01	7.78E-01	7.64E-05	6.69E-01	8.42E-01	8.42E-01	8.42E-01	8.42E-01	6.68E-01	6.68E-01	4.59E-06	0.00E+00	1.22E-06	3.42E-02	0.00E+00	0.00E+00	8.42E-01
459	ALL	487886	3640017	NonCancerChronicDerived_InhSoilDerm	6.51E-01	7.48E-01	7.65E-05	6.51E-01	8.18E-01	8.18E-01	8.18E-01	8.18E-01	6.51E-01	6.51E-01	3.02E-06	0.00E+00	1.39E-06	3.88E-02	0.00E+00	0.00E+00	8.18E-01
449	ALL	487736	3640017	NonCancerChronicDerived_InhSoilDerm	6.38E-01	7.31E-01	7.50E-05	6.38E-01	8.08E-01	8.08E-01	8.08E-01	8.08E-01	6.38E-01	6.38E-01	2.83E-06	0.00E+00	1.31E-06	4.19E-02	0.00E+00	0.00E+00	8.08E-01
460	ALL	487901	3640017	NonCancerChronicDerived_InhSoilDerm	6.15E-01	7.06E-01	7.26E-05	6.15E-01	7.72E-01	7.72E-01	7.72E-01	7.72E-01	6.15E-01	6.15E-01	3.26E-06	0.00E+00	1.51E-06	3.62E-02	0.00E+00	0.00E+00	7.72E-01
448	ALL	487721	3640017	NonCancerChronicDerived_InhSoilDerm	6.02E-01	6.90E-01	7.04E-05	6.02E-01	7.61E-01	7.61E-01	7.61E-01	7.61E-01	6.02E-01	6.02E-01	2.75E-06	0.00E+00	1.27E-06	3.82E-02	0.00E+00	0.00E+00	7.61E-01
518	ALL	488407.4	3640323	NonCancerChronicDerived_InhSoilDerm	5.84E-01	6.75E-01	6.73E-05	5.84E-01	7.36E-01	7.36E-01	7.36E-01	7.36E-01	5.84E-01	5.84E-01	4.57E-06	0.00E+00	2.11E-06	3.00E-02	0.00E+00	0.00E+00	7.36E-01
516	ALL	488413.7	3640294	NonCancerChronicDerived_InhSoilDerm	5.77E-01	6.66E-01	6.65E-05	5.77E-01	7.27E-01	7.27E-01	7.27E-01	7.27E-01	5.77E-01	5.77E-01	4.62E-06	0.00E+00	2.13E-06	2.96E-02	0.00E+00	0.00E+00	7.27E-01
447	ALL	487706	3640017	NonCancerChronicDerived_InhSoilDerm	5.53E-01	6.34E-01	6.45E-05	5.53E-01	6.98E-01	6.98E-01	6.98E-01	6.98E-01	5.53E-01	5.53E-01	2.66E-06	0.00E+00	1.23E-06	3.41E-02	0.00E+00	0.00E+00	6.98E-01
461	ALL	487916	3640017	NonCancerChronicDerived_InhSoilDerm	5.44E-01	6.25E-01	6.51E-05	5.44E-01	6.83E-01	6.83E-01	6.83E-01	6.83E-01	5.44E-01	5.44E-01	3.73E-06	0.00E+00	1.72E-06	3.18E-02	0.00E+00	0.00E+00	6.83E-01
446	ALL	487691	3640017	NonCancerChronicDerived_InhSoilDerm	5.02E-01	5.81E-01	5.89E-05	5.02E-01	6.40E-01	6.40E-01	6.40E-01	6.40E-01	5.02E-01	5.02E-01	2.54E-06	0.00E+00	1.17E-06	3.03E-02	0.00E+00	0.00E+00	6.40E-01
208	ALL	487761.1	3639997	NonCancerChronicDerived_InhSoilDerm	5.07E-01	5.77E-01	5.96E-05	5.07E-01	6.34E-01	6.34E-01	6.34E-01	6.34E-01	5.07E-01	5.07E-01	2.73E-06	0.00E+00	1.26E-06	3.15E-02	0.00E+00	0.00E+00	6.34E-01
515	ALL	488416.8	3640279	NonCancerChronicDerived_InhSoilDerm	5.00E-01	5.78E-01	5.82E-05	5.00E-01	6.30E-01	6.30E-01	6.30E-01	6.30E-01	5.00E-01	5.00E-01	4.64E-06	0.00E+00	2.14E-06	2.57E-02	0.00E+00	0.00E+00	6.30E-01
4135	ALL	487778.4	3639997	NonCancerChronicDerived_InhSoilDerm	4.84E-01	5.56E-01	5.75E-05	4.85E-01	6.11E-01	6.11E-01	6.11E-01	6.11E-01	4.84E-01	4.84E-01	2.75E-06	0.00E+00	1.27E-06	3.00E-02	0.00E+00	0.00E+00	6.11E-01
4134	ALL	487763.4	3639997	NonCancerChronicDerived_InhSoilDerm	4.78E-01	5.50E-01	5.68E-05	4.79E-01	6.04E-01	6.04E-01	6.04E-01	6.04E-01	4.78E-01	4.78E-01	2.72E-06	0.00E+00	1.25E-06	2.98E-02	0.00E+00	0.00E+00	6.04E-01
462	ALL	487931	3640017	NonCancerChronicDerived_InhSoilDerm	4.75E-01	5.46E-01	5.84E-05	4.75E-01	5.97E-01	5.97E-01	5.97E-01	5.97E-01	4.75E-01	4.75E-01	4.49E-06	0.00E+00	2.08E-06	2.77E-02	0.00E+00	0.00E+00	5.97E-01
4133	ALL	487748.4	3639997	NonCancerChronicDerived_InhSoilDerm	4.70E-01	5.40E-01	5.59E-05	4.71E-01	5.94E-01	5.94E-01	5.94E-01	5.94E-01	4.70E-01	4.70E-01	2.66E-06	0.00E+00	1.23E-06	2.95E-02	0.00E+00	0.00E+00	5.94E-01
3695	ALL	488424	3640305	NonCancerChronicDerived_InhSoilDerm	4.72E-01	5.45E-01	5.50E-05	4.72E-01	5.94E-01	5.94E-01	5.94E-01	5.94E-01	4.72E-01	4.72E-01	4.43E-06	0.00E+00	2.05E-06	2.43E-02	0.00E+00	0.00E+00	5.94E-01
4136	ALL	487793.4	3639997	NonCancerChronicDerived_InhSoilDerm	4.67E-01	5.37E-01	5.56E-05	4.68E-01	5.89E-01	5.89E-01	5.89E-01	5.89E-01	4.67E-01	4.67E-01	2.77E-06	0.00E+00	1.28E-06	2.88E-02	0.00E+00	0.00E+00	5.89E-01
445	ALL	487676	3640017	NonCancerChronicDerived_InhSoilDerm	4.68E-01	5.36E-01	5.42E-05	4.68E-01	5.89E-01	5.89E-01	5.89E-01	5.89E-01	4.68E-01	4.68E-01	2.40E-06	0.00E+00	1.11E-06	2.72E-02	0.00E+00	0.00E+00	5.89E-01
4132	ALL	487793.4	3639997	NonCancerChronicDerived_InhSoilDerm	4.63E-01	5.31E-01	5.50E-05	4.63E-01	5.85E-01	5.85E-01	5.85E-01	5.85E-01	4.63E-01	4.63E-01	2.59E-06	0.00E+00	1.20E-06	2.91E-02	0.00E+00	0.00E+00	5.85E-01
3678	ALL	488424	3640285	NonCancerChronicDerived_InhSoilDerm	4.61E-01	5.33E-01	5.39E-05	4.61E-01	5.81E-01	5.81E-01	5.81E-01	5.81E-01	4.61E-01	4.61E-01	4.51E-06	0.00E+00	2.08E-06	2.38E-02	0.00E+00	0.00E+00	5.81E-01
4138	ALL	487833.4	3639997	NonCancerChronicDerived_InhSoilDerm	4.57E-01	5.26E-01	5.45E-05	4.58E-01	5.76E-01	5.76E-01	5.76E-01	5.76E-01	4.57E-01	4.57E-01	2.81E-06	0.00E+00	1.30E-06	2.79E-02	0.00E+00	0.00E+00	5.76E-01
4139	ALL	487838.4	3639997	NonCancerChronicDerived_InhSoilDerm	4.57E-01	5.25E-01	5.45E-05	4.57E-01	5.75E-01	5.75E-01	5.75E-01	5.75E-01	4.57E-01	4.57E-01	2.83E-06	0.00E+00	1.31E-06	2.77E-02	0.00E+00	0.00E+00	5.75E-01
4137	ALL	487808.4	3639997	NonCancerChronicDerived_InhSoilDerm	4.55E-01	5.23E-01	5.42E-05	4.56E-01	5.74E-01	5.74E-01	5.74E-01	5.74E-01	4.55E-01	4.55E-01	2.79E-06	0.00E+00	1.29E-06	2.80E-02	0.00E+00	0.00E+00	5.74E-01
4131	ALL	487718.4	3639997	NonCancerChronicDerived_InhSoilDerm	4.53E-01	5.20E-01	5.37E-05	4.53E-01	5.72E-01	5.72E-01	5.72E-01	5.72E-01	4.53E-01	4.53E-01	2.51E-06	0.00E+00	1.16E-06	2.84E-02	0.00E+00	0.00E+00	5.72E-01
4140	ALL	487853.4	3639997	NonCancerChronicDerived_InhSoilDerm	4.54E-01	5.22E-01	5.43E-05	4.54E-01	5.72E-01	5.72E-01	5.72E-01	5.72E-01	4.54E-01	4.54E-01	2.87E-06	0.00E+00	1.33E-06	2.74E-02	0.00E+00	0.00E+00	5.72E-01
4130	ALL	487703.4	3639997	NonCancerChronicDerived_InhSoilDerm	4.45E-01	5.11E-01	5.27E-05	4.45E-01	5.62E-01	5.62E-01	5.62E-01	5.62E-01	4.45E-01	4.45E-01	2.41E-06	0.00E+00	1.11E-06	2.77E-02	0.00E+00	0.00E+00	5.62E-01
387	ALL	486831.9	3640096	NonCancerChronicDerived_InhSoilDerm	4.45E-01	5.08E-01	5.42E-05	4.45E-01	5.62E-01	5.62E-01	5.62E-01	5.62E-01	4.45E-01	4.45E-01	4.87E-07	0.00E+00	2.25E-07	2.17E-02	0.00E+00	0.00E+00	5.62E-01
514	ALL	488419.9	3640264	NonCancerChronicDerived_InhSoilDerm	4.38E-01	5.07E-01	5.16E-05	4.39E-01	5.52E-01	5.52E-01	5.52E-01	5.52E-01	4.38E-01	4.38E-01	4.66E-06	0.00E+00	2.15E-06	2.26E-02	0.00E+00	0.00E+00	5.52E-01
4141	ALL	488768.4	3639997	NonCancerChronicDerived_InhSoilDerm	4.37E-01	5.05E-01	5.25E-05	4.37E-01	5.50E-01	5.50E-01	5.50E-01	5.50E-01	4.37E-01	4.37E-01	2.96E-06	0.00E+00	1.37E-06	2.63E-02	0.00E+00	0.00E+00	5.50E-01
466	ALL	487991	3640017	NonCancerChronicDerived_InhSoilDerm	4.36E-01	5.02E-01	5.89E-05	4.37E-01	5.47E-01	5.47E-01	5.47E-01	5.47E-01	4.36E-01	4.36E-01	8.93E-06	0.00E+00	4.13E-06	2.42E-02	0.00E+00	0.00E+00	5.47E-01
444	ALL	487661	3640017	NonCancerChronicDerived_InhSoilDerm	4.34E-01	4.97E-01	5.01E-05	4.34E-01	5.45E-01	5.45E-01	5.45E-01	5.45E-01	4.34E-01	4.34E-01	2.27E-06	0.00E+00	1.05E-06	2.46E-02	0.00E+00	0.00E+00	5.45E-01
467	ALL	488006	3640017	NonCancerChronicDerived_InhSoilDerm	4.36E-01	5.01E-01	6.05E-05	4.36E-01	5.45E-01	5.45E-01	5.45E-01	5.45E-01	4.36E-01	4.36E-01	1.06E-05	0.00E+00	4.91E-06	2.39E-02	0.00E+00	0.00E+00	5.45E-01
4129	ALL	487688.4	3639997	NonCancerChronicDerived_InhSoilDerm	4.																

**APPLICATION TO THE SAN DIEGO
AIR POLLUTION CONTROL DISTRICT**

10124 Old Grove Road
San Diego, CA 92131

**Vulcan Materials Company
Carroll Canyon Facility (Aggregate Facility)
Facility ID 03641
Phase I Modification**

Prepared For:

Vulcan Materials Company, Western Division
7220 Trade Street, Suite 200
San Diego, CA 92121

Project No.: VULCN-20-2718
Contact: Scott Taylor
Date: August 21, 2022



TAYLOR ENVIRONMENTAL SERVICES

5122 Bolsa Avenue, Suite 101
Huntington Beach, CA 92649
Phone: (714) 587-2595 Fax: (714) 587-2598
www.tayloresinc.com

Internal Use Only	
APP ID: APCD	-APP/CER-
SITE ID: APCD	-SITE- 03641

**GENERAL PERMIT OR
REGISTRATION
APPLICATION FORM**



Submittal of this application does not grant permission to construct or to operate equipment except as specified in Rule 24(c).

REASON FOR SUBMITTAL OF APPLICATION:

- New Installation
- Amendment to Existing Authority to Construct or Application
- Change of Permit Conditions
- Registration of Portable Equipment
- Existing Unpermitted Equipment or Rule 11 Change
- Change of Equipment Location
- Change Permit to Operate Status to Inactive
- Other (Specify) _____
- Modification of Existing Permitted Equipment
- Change of Equipment Ownership *(please provide proof of ownership)*
- Banking Emissions

List affected APP/PTO Record ID(s): 870745

APPLICANT INFORMATION

Name of Business (DBA) Vulcan Materials Western Division Calmat

Does this organization own or operate any other APCD permitted equipment at this or any other adjacent locations? Yes No

If yes, list assigned Site Record IDs listed on your Permits _____

Name of Legal Owner (if different from DBA) Vulcan Materials Western Division Calmat

Equipment Owner			Authority to Construct Mailing Address		
Name: Vulcan Materials Western Division Calmat			Name: Vulcan Materials Western Division Calmat		
Mailing Address: 10051 Black Mountain Rd.			Mailing Address: 500 N. Brand Blvd, Suite 500		
City:	State:	Zip:	City:	State:	Zip:
Phone: () 818 553-8823			Phone: () 818 553-8823		
E-Mail Address: leclercb@vmcmail.com			E-Mail Address: leclercb@vmcmail.com		

Permit To Operate Mailing Address			Invoice Mailing Address		
Name: Vulcan Materials Western Division Calmat			Name: Vulcan Materials Western Division Calmat		
Mailing Address: 500 N. Brand Blvd, Suite 500			Mailing Address: 500 N. Brand Blvd, Suite 500		
City: Glendale	State: CA	Zip: 91203	City: Glendale	State: CA	Zip: 91203
Phone: () 818 553-8823			Phone: () 818 553-8823		
E-Mail Address: leclercb@vmcmail.com			E-Mail Address: leclercb@vmcmail.com		

EQUIPMENT/PROCESS INFORMATION: Type of Equipment: Stationary Portable, *if portable please enter below the equipment storage address.* If portable, will operation exceed 12 consecutive months at the same location Yes No

Equipment Location Address _____ City _____ State: _____

Parcel No. _____ Zip _____ Phone () _____ E-mail: _____

Site Contact _____ Phone () _____

General Description of Equipment/Process _____

Application Submitted by Owner Operator Contractor Consultant Affiliation _____

EXPEDITED APPLICATION PROCESSING: I hereby request Expedited Application Processing and understand that:

- a) Expedited processing will incur additional fees and permits will not be issued until the additional fees are paid in full (see Rule 40(d)(8)(iv) for details)
- b) Expedited processing is contingent on the availability of qualified staff
- c) Once engineering review has begun this request cannot be cancelled
- d) Expedited processing does not guarantee action by any specific date nor does it guarantee permit approval.

This application contains trade secret or confidential information (see reverse for instructions)

I hereby certify that all information provided on this application is true and correct.

Print Name Brent Leclerc Date 8/21/2022
 Phone () 818 553-8823 Company Vulcan Materials Company
 E-mail Address leclercb@vmcmail.com

Internal Use Only

Date _____	Staff Initials: _____	Amt Rec'd \$ _____	Fee Schedule _____
RNP: _____	EMF: _____	NBF: _____	TA: _____

**SAN DIEGO COUNTY AIR POLLUTION CONTROL DISTRICT
APPLICATION FEE ESTIMATE**

Applicant Site ID/EIF ID:	APCD1985-SITE-03641	APCD2007-PTO-001233	
Applicant DBA:	Vulcan Materials Company Western Division	Fee Schedule: 7A	07B & 07C
		Reason for Submittal: Modification	
		Existing Site? Yes	
APCD Engineer:	Camqui Nguyen	Estimate Date: 8/18/2022	
Equipment Description:	Modification to Permit 001233 for a rock plant. Modification includes: equipment reduction, construction of a new aggregate receiving & processing system. Risk assessment to incorporate both Rule 1200 and Rule 1210 requirements.		

ACTIVITY	EMPLOYEE CLASSIFICATION	LABOR HOURS	COST	SUBTOTAL	
Initial Evaluation Fee - T&M (Rule 40(d)(3)(i))					
Authority to Construct	Engineering Services	25.0	\$5,950.00		ETM
Permit to Operate	Engineering Services	4.0	\$952.00	\$6,902.00	ETM
T&M Application - No Fixed Fee, see above					
Authority to Construct/Permit to Operate		N/A	T+M	\$0.00	ETM
Additional Evaluation and Processing Fees (Rule 40(d)(5))					
New Source Review	Engineering Services	4.0	\$952.00	\$952.00	NSR
	Monitoring Services		\$0.00	\$0.00	AQI
Prev. Significant Deterioration	Engineering Services		\$0.00	\$0.00	PSD
Toxics New Source Review (Health Risk Assessment)	Engineering Services		\$0.00		
	Monitoring Services		\$0.00		
	HRA Base Estimate	Standard	\$5,072.00	\$5,072.00	TNS
Tile V	Engineering Services		\$0.00	\$0.00	TIV
NESHAPS/ATCM/NSPS	Engineering Services	4.0	\$952.00	\$952.00	HAP
CEQA	Engineering Services		\$0.00	\$0.00	CEQ
AB 3205 Notice	Engineering Services		\$0.00		
	Public Notice Costs		\$0.00	\$0.00	AB3
Equipment subject to Rule 11(a)(3)	Engineering Services		\$0.00	\$0.00	R51
H&SC 42301(e)	Engineering Services		\$0.00	\$0.00	HSC
Testing or Test Witness	Engineering Services		\$0.00		STF
	Source Testing Services		\$0.00		ad-hoc
Fixed Test Fee Sched.	NA	Fixed Testing Fees	\$0.00	\$0.00	ad-hoc
Miscellaneous Fees					
Processing Fee (Rule 40(d)(1)(ii))		1.0	\$98	\$98.00	EFX
Renewal Fee (Rule 40(e)(2)(ii))		N/A	N/A	\$0.00	REN
Emissions Fee (Rule 40(e)(2)(iv))			N/A	\$0.00	EMF

NOTES:

ESTIMATE TOTAL: \$13,976.00

- (1) To avoid possible processing delays, this document should be submitted with your application forms.
- (2) The fees contained in this estimate are based on APCD Rule 40. Final fee may be more or less than this estimate (see Rule 40(d)(1)(iii)).
- (3) Emissions determined to be greater than 5 tons per year will be charged a emission fee on a ton per year basis. (see Rule 40 (e)(2)(iv)(A))
- (4) Fees paid by credit card will be assessed a 2.19% processing fee (see Rule 40(c)(5))
- (5) Federal government payments made through DFAS: Please reference the above Site ID Record number in your DFAS submittal.
- (6) This estimate is valid only for applications received by the District by June 30, 2023



TABLE OF CONTENTS

EXECUTIVE SUMMARY	1
PART I PROJECT DESCRIPTION	2
A. Business Background	2
1. Name	2
2. Owner.....	2
3. Contact.....	2
4. Entitlement	2
5. Type of Business.....	2
6. Business Description	2
B. Type of Application	2
C. Description of Facility	2
1. Location.....	2
2. General Purpose of Facility	2
D. Description of Process Modification	3
1. Flow Diagram	4
2. Operating Schedule.....	4
3. Annotated Permit	4
4. Permit Restrictions.....	4
PART II – RULE 1200 TOXICS AIR QUALITY DISPERSION MODELING DATA	5

Attachment	–	Description
"A"	–	Flow Diagram
"B"	–	Annotated Permit



EXECUTIVE SUMMARY

Vulcan Materials Company is submitting a modification to the Aggregate Plant located at 10051 Black Mountain Road, San Diego, CA 92121. On February 22, 2022, Vulcan received approval of the 2017 Health Risk Assessment (HRA). The approved HRA determined an occupational Acute Health Hazard Index and a maximum occupational Chronic Health Hazard Index above 1. Pursuant to Rule 1210 (e)1, HRA's resulting in a risk equal to or greater than 1.0, above the significance risk threshold, a risk reduction audit and plan is required. This modification is being submitted to modify the aggregate plant to reduce the risk to below 1. .

The Carroll Canyon facility is in the process of transitioning the current mining operation to a smaller mining/recycling operation. This transition will result in a dry and wet portions of the aggregate processing operation to be shutdown. The sources impacted by the modification will cease operation by the end of Quarter 1 of 2023. The facility will be using some of the existing equipment for the modified operation.

The modification will be performed in two phases. Phase I will be the discontinued operation of portions of the aggregate plant by March 2023. Phase II will include an modified operation which will be located at the west end of the property. As discussed with SDAPCD, it is not possible to provide both applications at this time. Phase I of the reduction will demonstrate the modification of the stationary plant permit will reduce the risk below the Acute and Chronic Hazard Indexes satisfying the requirements of the Risk Reduction Plan. Phase II will include the modified operation which will evaluate the increase from the additional equipment (Rule 1200) and an updated HRA that will look at the entire facility risk (Rule 1210). Phase II will be submitted under separate cover.

PART I PROJECT DESCRIPTION

A. Business Background

1. Name
Vulcan Materials Company, Western Division
7220 Trade Street, Suite 200
San Diego, CA 92121-1649
2. Owner
Vulcan Materials Company
3. Contact
Brent Leclerc Manager Environmental Services
(818) 858-5984
4. Entitlement
Equipment to be owned and operated by Vulcan
Materials Company
5. Type of Business
California Corporation
6. Business Description
Aggregate Plant

B. Type of Application

Modification

C. Description of Facility

1. Location
10051 Black Mountain Road, San Diego, CA 92121
2. General Purpose of Facility
The Aggregate Plants primary purpose is to convey, crush and screen aggregate.

D. Description of Process Modification

1. Phase I (Aggregate Plant Decommissioning)

This modification is in conjunction with the Risk Reduction Plan submitted under separate cover. The application will modify the Permit to Operate for the Aggregate plant (APP870745). The revised HRA demonstrates the modification will reduce the Hazard Index thresholds below both Acute and Chronic Indexes.

The transition of the aggregate plant to smaller mining/recycling operation has already begun with regards to the operation of the facility. Over the next seven months the equipment will be decommissioned by removing key pieces of equipment as well as some of the plant infrastructure.

As a part of this process the primary plant will discontinue the use of the primary surge pile and pit feed.

The Secondary Plant will discontinue the use of much of the equipment. The modification includes the removal of the following equipment

Equipment Description	Plant Location
Two 5-1/2 Secondary Cone Crushers	Secondary Plant
Five Dry Screens	Secondary Plant
One 100 Ton Rock Box	Secondary Plant
One Torit Donaldson Baghouse	Secondary Plant
Conveyors	Secondary Plant

There are several storage piles that currently have material in them and are associated with the secondary plant. While the equipment is in the process of becoming inoperable the piles will continue to be worked until all the material is removed. At that point, this portion of the aggregate plant and its associated equipment will cease to be operational.

Due to the size and complexity of the plant, the decommissioning will be taking place at different portions of the plant at different times. Ultimately both the equipment and stockpiles detailed in the application will be shut down by the end of March 2023.

2. Phase II (Modified System)

Phase II will be the permitting of the smaller mining/recycling operation. The modified system has been sketched out and now work is beginning to select the equipment that will be used for the system. The schedule is to submit the application for the modified system some time between September 2022 and the end of 2023. There are several factors that must be addressed including lead time for equipment, capital for equipment and infrastructure so the plant can operate at the new location.

The modification of the aggregate plant for the new equipment will include an emissions analysis and an updated HRA to demonstrate the continued compliance with maintaining the operation below the thresholds. A preliminary HRA has been prepared and determined that the modification will remain below the thresholds after Phase II is complete. A formal analysis with the details of the HRA will be included in the Phase II submittal.

3. Flow Diagram

Refer to Attachment A for the Flow Diagram Figure 1 and Figure 2. These diagrams illustrate the equipment that will be removed and some general timing.

4. Operating Schedule

There are no planned modifications to the facility operating schedule.

5. Annotated Permit

Under Attachment A is an annotated permit which lists the major components which will be removed from the permit.

6. Permit Restrictions

There are no requested changes to the permit conditions as a result of either Phase I or Phase II modifications.



PART II – RULE 1200 TOXICS AIR QUALITY DISPERSION MODELING DATA

The risk reduction is being performed in two phases. Phase I will be the discontinued operation of portions of the aggregate plant by March 2023. Phase II will be the permitting of the smaller mining/recycling operation.

Phase I of the reduction has demonstrated the modification of the stationary plant permit will reduce the risk below the Acute and Chronic Hazard Indexes satisfying the requirements of the Risk Reduction Plan. A Risk Reduction plan has been submitted to SDAPCD under separate cover. The HARP modeling files used for the Phase 1 health risk assessment can be found at the following link:

<https://www.dropbox.com/sh/qdwyu4rwhrojmrl/AAC2yBB9g0px8U0I-DjpVMLAa?dl=0>

Phase II will include the modified system which will evaluate the increase from the additional equipment (Rule 1200) and an updated HRA that will look at the entire facility risk (Rule 1210). Phase II will be prepared and submitted under separate cover with an updated HRA.



TAYLOR
ENVIRONMENTAL
SERVICES, INC.

ATTACHMENT "A"

Flow Diagram

PLOT AT: 1=1.00

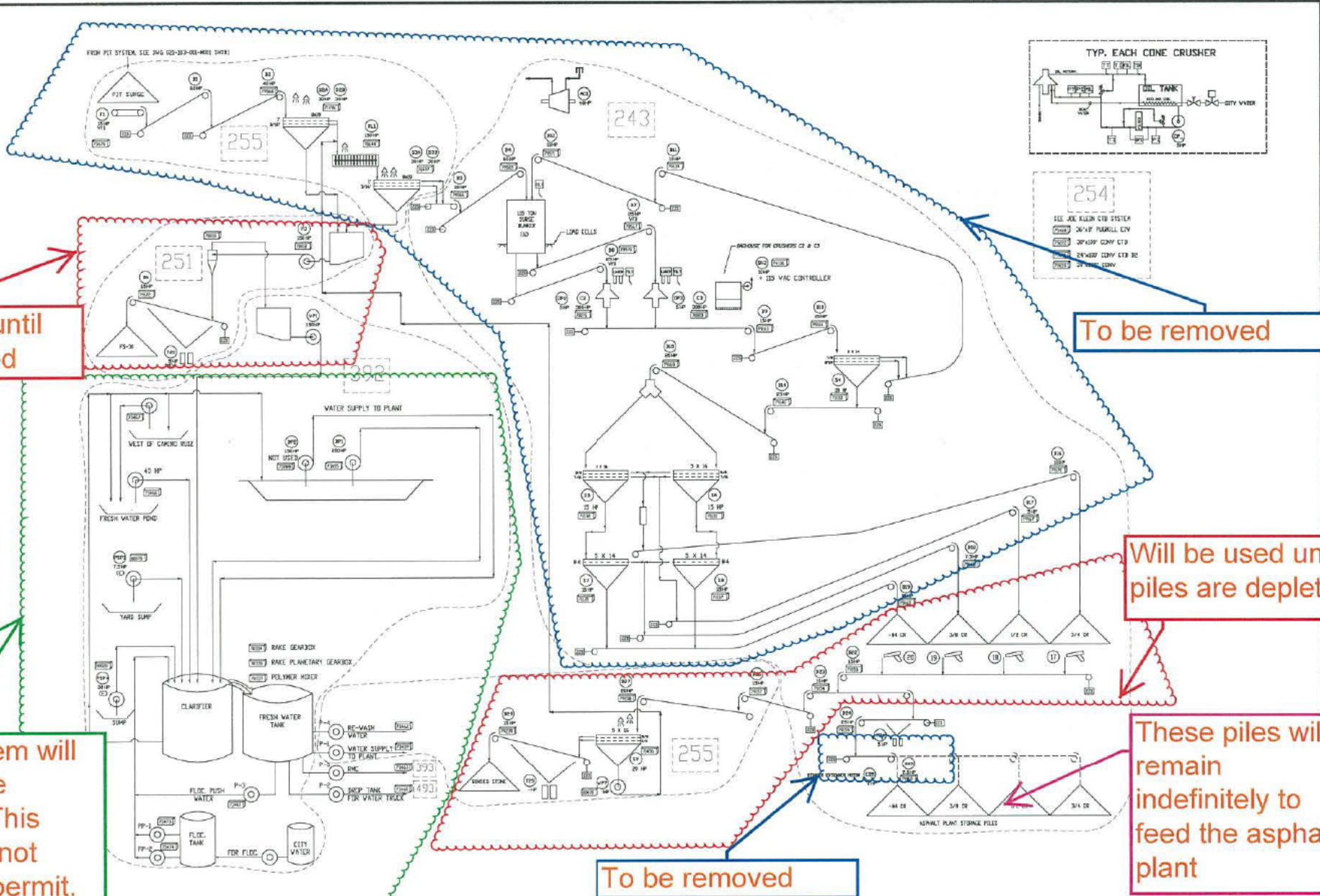
Will be used until pile is depleted

To be removed

Clarifier System will remain on site indefinitely. This equipment is not listed on the permit.

Will be used until piles are depleted

These piles will remain indefinitely to feed the asphalt plant



TOLERANCES-UNLESS NOTED FINISHES: 1" ± 0.01" DIMENSIONS: 1/8" ± 0.01" WEIGHTS: 1.0 ± 0.05"			PLANT FLOW CHART MAIN PLANT AREA		STATE: CALIFORNIA COUNTY: CARROLL CANYON	
THIS DRAWING IS DESIGNED AND CONSTRUCTED BY THE PROPERTY OF VULCAN MATERIALS COMPANY AND MUST BE RETURNED UPON REQUEST TO THE DRAWING AREA OR TO LOCAL REPRESENTATIVE OR USED WITHOUT PERMISSION.					SHEET 2 OF 2 5011-000-FLWAGG-0002 - 0	
DATE	REVISION	BY				



TAYLOR
ENVIRONMENTAL
SERVICES, INC.

ATTACHMENT "B"

Annotated Permit



COUNTY OF SAN DIEGO, AIR POLLUTION CONTROL DISTRICT
 10124 OLD GROVE ROAD, SAN DIEGO, CA 92131
 PHONE (858) 586-2600 FAX (858) 586-2601
 www.sdapcd.org

Sectors: 4, M
 Site Record ID: APCD1985-SITE-03641
 Application Record ID: APCD1988-APP-870745

PERMIT RECORD ID
 APCD2007-PTO-001233



Vulcan Materials Western Division Calmat
 Plant Manager
 500 N. Brand Blvd, Suite 500
 Glendale CA 91203

EQUIPMENT ADDRESS
 Vulcan Materials Western
 Environmental Manager
 10051 Black Mountain Rd
 San Diego CA 92126

PERMIT TO OPERATE

EXPIRES: June 30, 2021

Environmental Manager

This permit is not valid until required fees have been paid.

The above is hereby granted a Permit To Operate the article, machine, equipment or contrivance described below. This permit is not transferable to a new owner nor is it valid for operation of the equipment at another location except as specified. This Permit To Operate or copy must be posted on or within 25 feet of the equipment, or readily available on the operating premises.

EQUIPMENT OWNER

Vulcan Materials Co., Western Division ~~Tony Vansco~~ 500 N. Brand Blvd, Suite 500, Glendale, CA 91203

EQUIPMENT DESCRIPTION

ROCKS AND PLANT CONSISTING OF: OVERLAND PIT PROCESS SYSTEM (1000 TONS/HR CAPACITY), WITH SIXTEEN PIT CONVEYORS, ONE PIT SCALPER WITH WATER SPRAY, ONE PRIMARY GYRATORY CRUSHER WITH A TORIT DONALDSON DCE BAGHOUSE, ONE 2400-FOOT CONVEYOR AND A SECONDARY PLANT PROCESS SYSTEM (750 TONS/HR CAPACITY), WITH ~~TWO 5-1/2" SECONDARY CONE CRUSHERS, ONE LOG WASHER, THREE WET SCREENS, FIVE DRY SCREENS, ONE 100-TON ROCK BOX, ONE TORIT DONALDSON BAGHOUSE, FIVE FEEDERS, TWENTY-NINE CONVEYOR BELTS, AND A TRUCK LOADOUT SYSTEM.~~ (APPL #870745/JJS) (0888870745) (973060 ALC 10/00) (976056 EFH 02/05) (978760 ALC 01/07)

Every person who owns or operates this equipment is required to comply with the conditions listed below and all applicable requirements and District rules, including but not limited to Rules 10, 20, 40, 50, 51.

- Fee Schedules: 1 [07C] Loadout System
 2 [07B] Screening System
 3 [07A] Crusher System

BEC: 11833

FAILURE TO OPERATE IN COMPLIANCE IS A MISDEMEANOR SUBJECT TO CIVIL AND CRIMINAL PENALTIES

1. Operation shall be in compliance with all information included in applications for this permit to operate, as approved by the District, and with all conditions listed herein.
2. A differential pressure gauge shall be installed across the Baghouse filter media and maintained in good working order at all times to measure the pressure drop across the filters. The pressure drop across the filter media shall be maintained between 1 and 10 inches of water.
3. Water and/or surfactant spray systems shall be used to control particulate matter emissions at all aggregate transfer points, screens, and the truck load out station such that the opacity does not exceed 10% at any time.
4. Water and/or surfactant spray systems shall be used to control particulate matter emissions at all crushers such that the opacity does not exceed 15% at any time.



COUNTY OF SAN DIEGO, AIR POLLUTION CONTROL DISTRICT
10124 OLD GROVE ROAD, SAN DIEGO, CA 92131
PHONE (858) 586-2600 FAX (858) 586-2601
www.sdapcd.org

Sectors: 4, M
Site Record ID: APCD1985-SITE-03641
Application Record ID: APCD1988-APP-870745

PERMIT RECORD ID
APCD2007-PTO-001233



5. All access and haul roads in use by mobile traffic shall be adequately watered to ensure that the visible dust emissions from these roads do not exceed the emissions standard of Rule 50, measured eight feet above the road surface.
6. The material processed in this equipment may be sampled and tested, at the applicant's expense, so as to determine the moisture content of the aggregate. If tested, the moisture content shall be at least 3%. Additionally, the moisture content of samples taken at the primary scalper and/or the fs15 screen shall be at least 5%.
7. The maximum throughput of material at the pit process system shall not exceed 12,000 tons per day or 2,000,000 tons per rolling twelve-month period. The Permittee shall maintain records of daily and monthly throughput.
8. The maximum throughput of material at the plant process system shall not exceed 7,500 tons per day or 2,000,000 tons per rolling twelve-month period. The Permittee shall maintain records of daily and monthly throughput.
9. All records required by this Permit, including daily and monthly throughputs, shall be maintained on-site for a minimum of three years and made available to District personnel upon request.
10. Access, facilities, utilities and any necessary safety equipment for source testing and inspection shall be provided upon request of the Air Pollution Control District.
11. This Air Pollution Control District Permit does not relieve the holder from obtaining permits or authorizations required by other governmental agencies.
12. The permittee shall, upon determination of applicability and written notification by the District, comply with all applicable requirements of the Air Toxics "Hot Spots" Information and Assessment Act (California Health and Safety Code Section 44300 et seq.)